

Four Primary Schools in Modular Design Munich 2015-2017

wulf architekten gmbh
breitscheidstraße 8
70174 stuttgart

t +49 711 248917-0
f +49 711 248917-10

pr@wulfarchitekten.com
www.wulfarchitekten.com

Locations

Ruth-Drexel-Straße 27
Bauhausplatz 9
Freihamer Weg 55
Gustl-Bayrhammer-Straße 21
München

Client

Landeshauptstadt München
Referat für Bildung und Sport

Competition

1st prize 10/2013

Start of construction

06/2015

Service phases

1-5

Completion

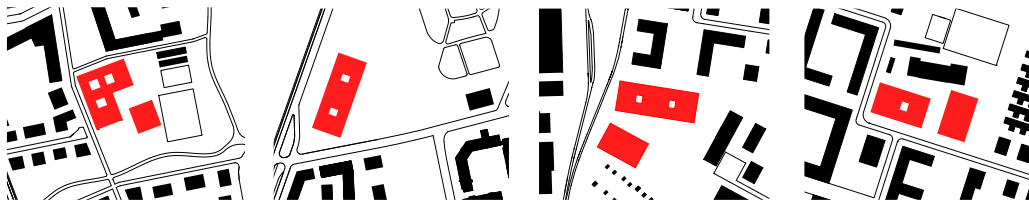
08/2017

Building costs

cost groups 200-700
ca. 103.2 Mio. €

Photos

© Brígida González



Gustl-Bayrhammer-Straße

Freihamer Weg

Ruth-Drexel-Straße

Bauhausplatz

view from the east



site plans of the four schools



access balcony



atrium



open stair case



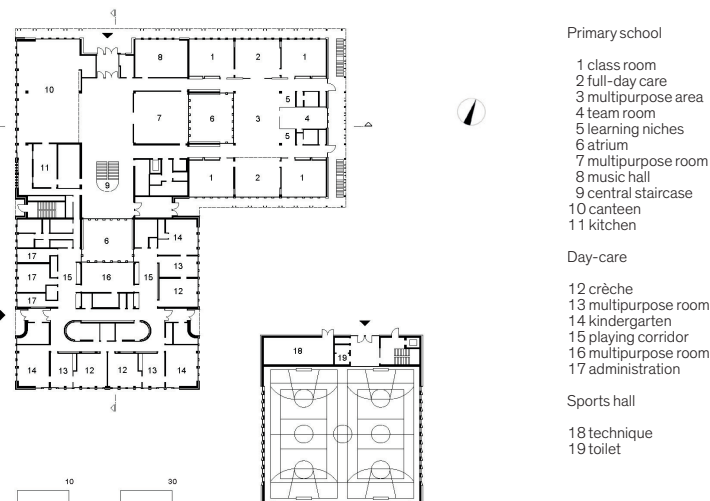
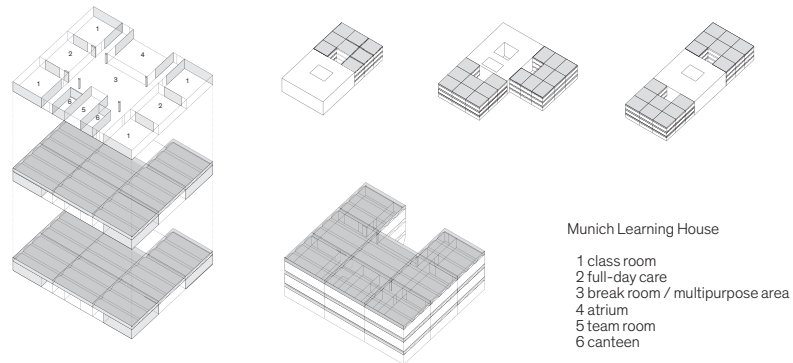
wulf
architekten

4 Primary Schools in Modular Design Munich

The educational concept of the learning house ("Munich Learning House") is the starting point for developing an intelligent and constructively well-engineered learning house module that consists of four classrooms, two interconnected rooms for all-day care, and a workroom for teaching and childcare staff that are all grouped around a central communal space. The peripheral access galleries give all the rooms a direct exit to the outside, which affords unrestricted use of the entire learning house in compliance with fire safety regulations.

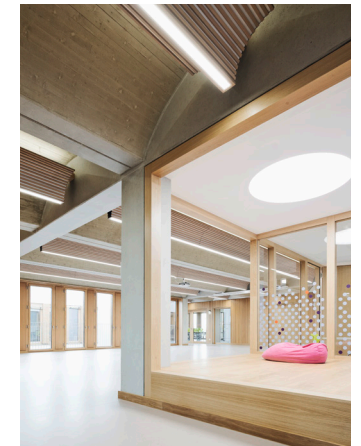
The barrel vaulting we selected for our design staves off the threat of monotony and anonymity by creating spaces with a distinctive character that not only conveys a sense of security but is also highly memorable. We view this special spatial quality, which the pupils and teachers can experience through the senses, as the antithesis of the stereotypical product of modular construction.

Two of the four primary schools with all-day care are located on former military sites on Ruth-Drexel-Straße in Oberföhring and Bauhausplatz in Schwabing, and the other two are in the Freiham development area: in Gustl-Bayrhammer-Straße and in Aubinger Allee.



isometry of the modular
design of a learning house
↖

ground floor
primary school at Freiham
Quartierszentrum
←



view into the
multipurpose area
↑ ↑

class room
↖

multipurpose area
←

learning niche
↑

**wulf
architekten**