

Fire Station in Straubenhardt 2017–2022

Location
Langenalber Straße
75334 Straubenhardt

Client
Gemeinde Straubenhardt

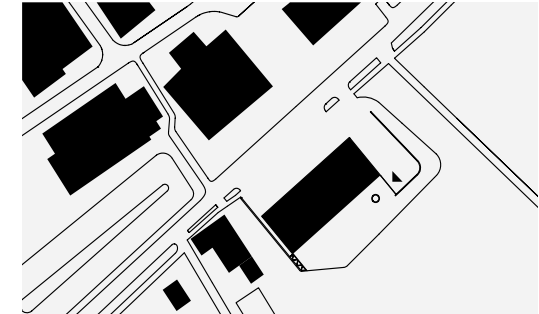
VgV procedure
04 2017

Start of construction
02 2019

Service phases
1–9

Completion
03 2022

wulf architekten gmbh
Breitscheidstraße 8
70714 Stuttgart
Telefon +49 711 248917-0
pr@wulfarchitekten.com
www.wulfarchitekten.com



Images

- 1 View from Langenalber Straße
- 2 The vehicle hall with 7 parking spaces located on the ground floor
- 3 Entry to the garage for the firefighting vehicles
- 4 Site plan



The new fire station brings together six previously independent firefighting units at one strategically located site on Langenalberstraße. The project was designed with the goal of implementing circular construction and sustainable planning in accordance with the “Cradle to Cradle” principle.

The separation and stacking of the individual functional levels and the use of the site’s sloping terrain are part of the fundamental design concept. As a result, the sealed soil surface could be minimized and, moreover, the building structure nestles harmoniously into the topography. The massive concrete plinth is cut into the slope and the north-facing facade opens to the street. Inside are the garage for the firefighting vehicles and all the facilities required for operations, as well as storage and technical areas. The open-air intermediate level has two atriums and captures the surrounding landscape. It is reached along an external ramp and serves as a parking deck as well as an area for events. Raised up above this is a wooden structure that is wrapped in a homogeneous facade of white expanded metal. It accommodates a classroom, office areas, and other shared spaces. The stacking of the different functional zones is clearly recognizable from the outside, creating a distinctive appearance that establishes a strong identity.

By using recyclable materials that are low in harmful substances and can be easily separated and reused when dismantled, the building is a valuable raw material supplier and future material resource. The new fire station, one of the first Cradle to Cradle buildings in all of Germany, is a trailblazing building whose exemplary character acts as an important stimulus for future developments.

Images

- 5 View from the meadow orchard from the southeast
- 6 View into the vehicle hall
- 7 The stacking of the different functional zones clearly recognizable from the outside
- 8 Raised wooden structure accommodating a classroom, office areas, and other shared spaces
- 9 Floor plan, level 01
- 10 Section
- 11 Isometric view

Photos: © Brigida González



5



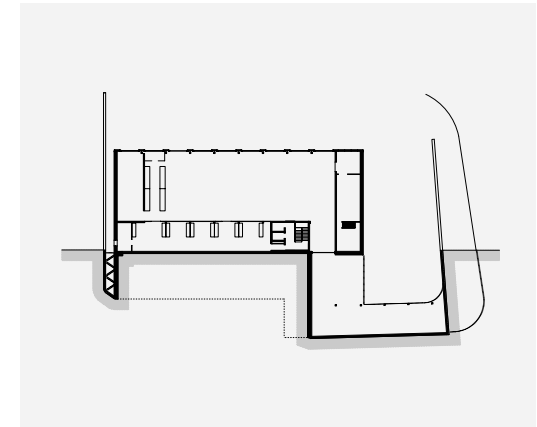
6



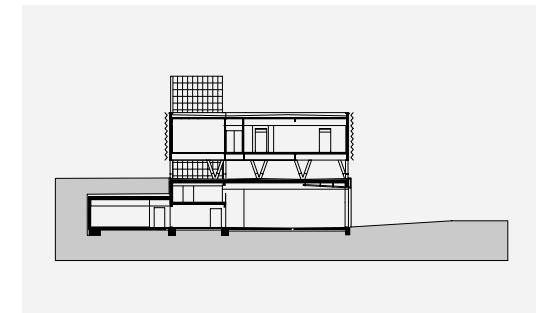
7



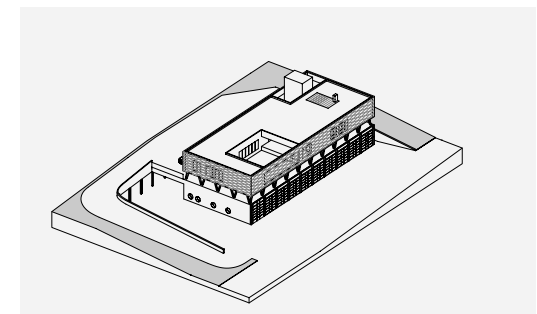
8



9



10



11